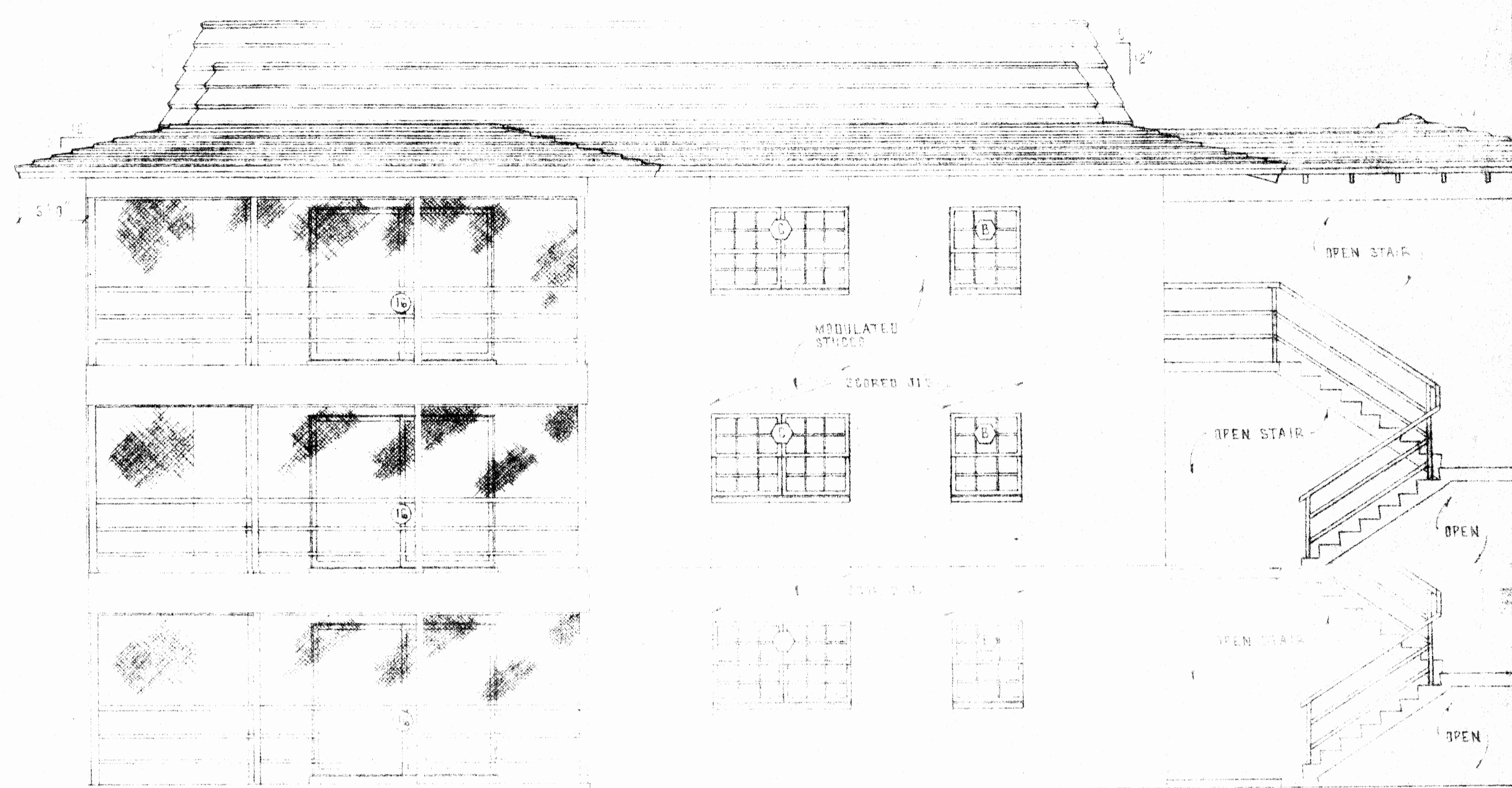
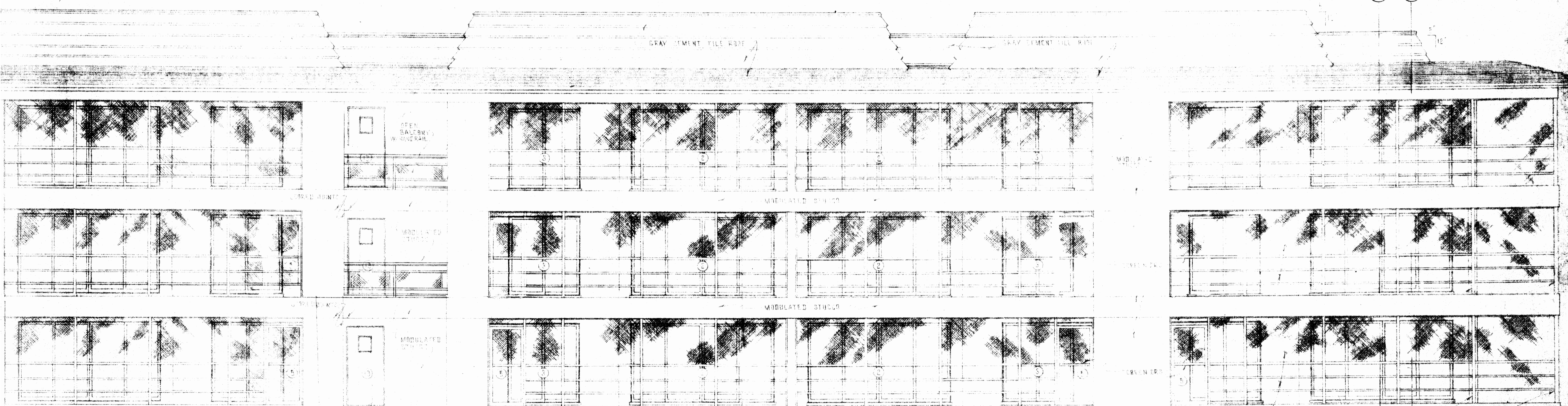


REAR ELEVATION
SCALE: 1/4" = 1'-0"



LEFT END ELEVATION (AS SHOWN)
RIGHT END ELEVATION (OPPOSITE HAND)
SCALE: 1/4" = 1'-0"

NOTE: THESE ELEVATIONS ARE TYPICAL FOR THIS TYPE BLDG (TYPE)



REAR ELEVATION (CONT.)
SCALE: 1/4" = 1'-0"

COLLINS AND COMPANY
consulting engineers

WINDJAMMER 21 UNIT CONDO
BUILDING'S E THE BRITISH MERCHANT & CARLISLE CASTLE
REAR AND LEFT & RIGHT END EXTERIOR ELEVATIONS

REVISIONS
NOTE FOR SCALE PAPER
A-8/73

designed by
B.L.
scale
1/4" = 1'-0"
date
12-15-72
6 of 8
drawing number
212114